

**COLLEGE OF APPLIED SCIENCE, THODUPUZHA**

**Campus Renovation Master Plan**

Date: 31/10/2023



## Table of Contents

- Executive Summary
- Introduction
- Campus Beautification
- Canteen
- Playground
- Toilet Block
- Ladies Comfort Room
- Badminton Court
- Auditorium
- Store
- Industrial Unit
- Car Parking
- Conclusion



## Executive Summary

The Campus Renovation Master Plan for CAS, Thodupuzha is a comprehensive blueprint for the revitalization of our campus, designed to enrich the educational experience for students, faculty, and staff. This plan addresses the diverse needs and aspirations of our college community, aiming to create a vibrant and inclusive learning environment. From campus beautification to essential amenities such as a canteen, restroom facilities, and an auditorium, this plan emphasizes sustainability, inclusivity, and convenience.



## Introduction

The renovation of a college campus is a transformative endeavor that aims to create an enriched and inspiring educational environment for our community. Our objective is to foster an environment that encourages learning, collaboration, and personal growth. This master plan is a reflection of our commitment to that vision.

## Campus Beautification

- Plant trees, flowers, and shrubs to create a green and vibrant campus.
- Install walking paths and benches for leisure and relaxation.
- Place sculptures, art installations, or murals to enhance the aesthetics.

## Canteen:

- Construct a modern and spacious canteen building with indoor and outdoor seating options.
- Design an efficient kitchen layout with state-of-the-art equipment.
- Ensure a diverse and healthy menu to cater to the needs of students and staff.

## Playground:

- Develop a multi-purpose playground with facilities for various sports such as soccer, basketball, and volleyball.
- Install proper lighting for evening activities.
- Consider eco-friendly synthetic turf to reduce maintenance and water consumption.



### Toilet Block:

- Build clean and well-maintained restroom facilities.
- Include separate blocks for male and female students, as well as facilities for people with disabilities.
- Ensure regular cleaning and maintenance schedules.

### Ladies Comfort Room:

- Create a dedicated and comfortable space for female students and staff.
- Include amenities such as restrooms, lounges, and sanitary products dispensers.

### Badminton Court:

- Construct a covered badminton court with proper flooring and netting in front of the building.
- Install lighting for evening play.
- Consider spectator seating and storage for equipment.

### Auditorium:

- Build a state-of-the-art auditorium with minimum 500 seating capacity.
- Equip it with modern audio-visual technology and acoustics for events and lectures.



### Store:

- Establish a campus store for books, stationery, and college merchandise.
- Manage the store efficiently and offer discounts for students.

### Industrial Unit:

- Develop an industrial unit for vocational training, research, skill development, or to provide part-time job opportunities to students.
- Equip it with industry-standard machinery and technology.
- Promote industry-academic collaborations.

### Car Parking:

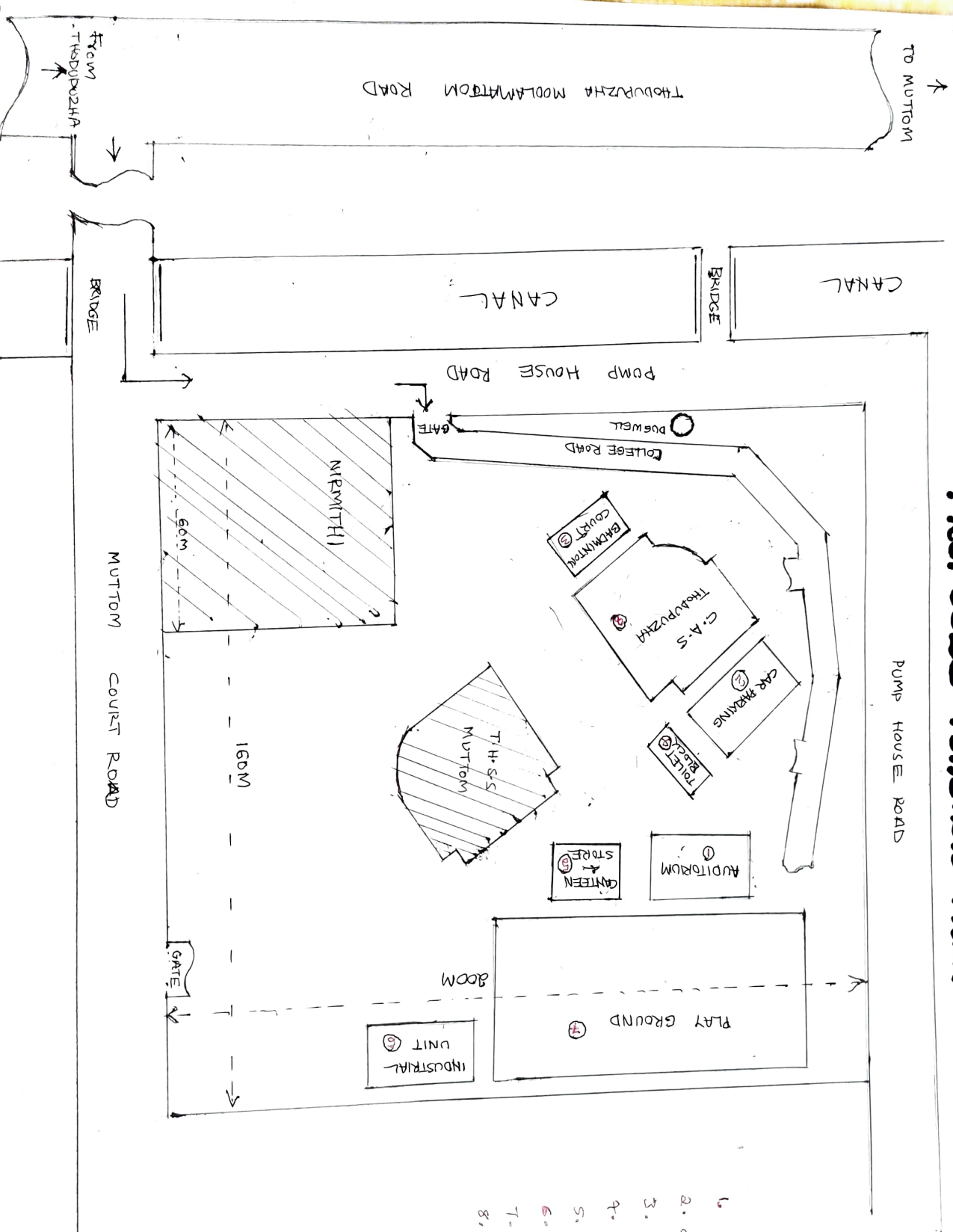
- Design a well-organized and secure parking area with sufficient capacity.
- Implement parking management systems to optimize space usage.

### Conclusion

This comprehensive master plan strives to create a vibrant, inclusive, and sustainable campus environment that supports the educational and personal development of our college community. We will work closely with students, faculty, staff, and local communities to bring this vision to life, ensuring that our campus remains a place of inspiration, innovation, and growth. Through our collective efforts, we will transform our campus into a hub of excellence and inspiration.



# COLLEGE OF APPLIED SCIENCES, THODUPUZHA PROPOSED HOSTEL PLAN



1. AUDITORIUM
2. CAR PARKING
3. BADMINTON COURT
4. TOILET BLOCK
5. CANTEEN & STORE
6. INDUSTRIAL UNIT
7. PLAY GROUND
8. LADIES COMFORT ROOM

